



Computing Services Centre
香港城市大學
City University of Hong Kong

USER GUIDE FOR **USING AV EQUIPMENT**

LI Dak Sum Yip Yio Chin Academic Building

1/F, 2/F & 3/F Classrooms (Dual Projection)

For IT or AV support, please contact the CSC Service Desk at **3442-8340**

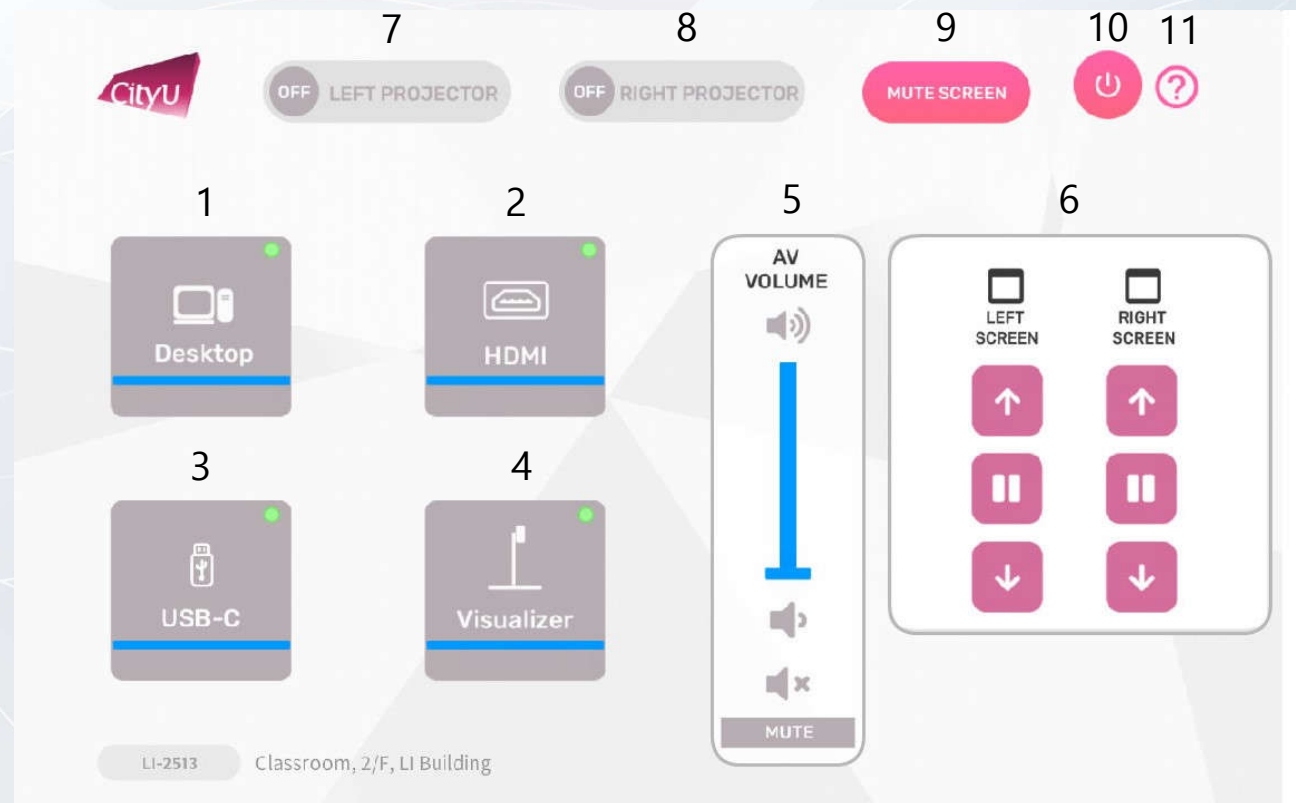
AV Control Panel

Display Source Select

1. Desktop Computer
2. HDMI Input (Use HDMI devices)
3. USB-C Input (Use USB-C devices)
4. Presentation for Visualizer

Other Control

5. Volume Control
6. Screen Control
7. Left Projector (On/Off)
8. Right Projector (On/Off)
9. Mute Projector(s)
10. System Off
11. Help information



Using AV Equipment

Operation procedure of the Desktop Input

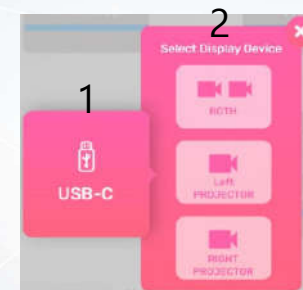
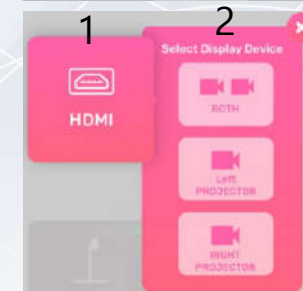
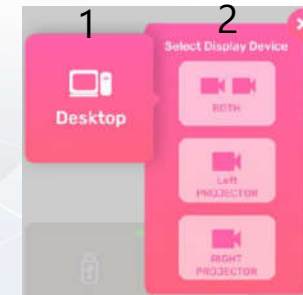
1. Press "Desktop " button
2. Select Display Devices (Both / Left Projector / Right Projector)

Operation procedure of the HDMI Input

1. Press "HDMI " button
2. Select Display Devices (Both / Left Projector / Right Projector)
3. Connect the device to HDMI cable

Operation procedure of the USB-C Input

1. Press "USB-C" button
2. Select Display Devices (Both / Left Projector / Right Projector)
3. Connect the device to USB-C cable



HDMI

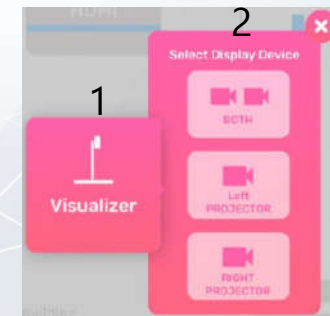


USB-C

Using AV Equipment

Operation procedure of Visualizer Input

1. Press "Visualizer" button
2. Select Display Devices (Both / Left Projector / Right Projector)



System OFF

1. Confirm Power off
2. Cancel Power off

